



DESCRIPTION

The manual mechanical bollard, without motorization or assistance with gas spring is the recommended solution to close an access occasionally.

FEATURES

Dimensions : Ø200 H640

Material : Steel - average thickness 4mm (bollard head)

Finish: Zinc-based primer as standard reinforcing corrosion-resistance
Matt finish thermosetting polyester powder top coat (RAL7016 standard)

Display device: Class II reflective band in white

Options

- Color choice (RAL)
- Display device with class II white, yellow or reflective band
- Specific print (T14, pentagon, type A)
- Additional handle
- Key lock system
- Lost casing



Compliant with NFP98-310 - Standard that defines the characteristics and performance of automatic, semi-automatic and manual retractable bollards.

Compliant with French decree PMR - Dimensions compliant with the decree of 18 September 2012 concerning the technical requirements for the accessibility of roads and public spaces for people with reduced mobility.

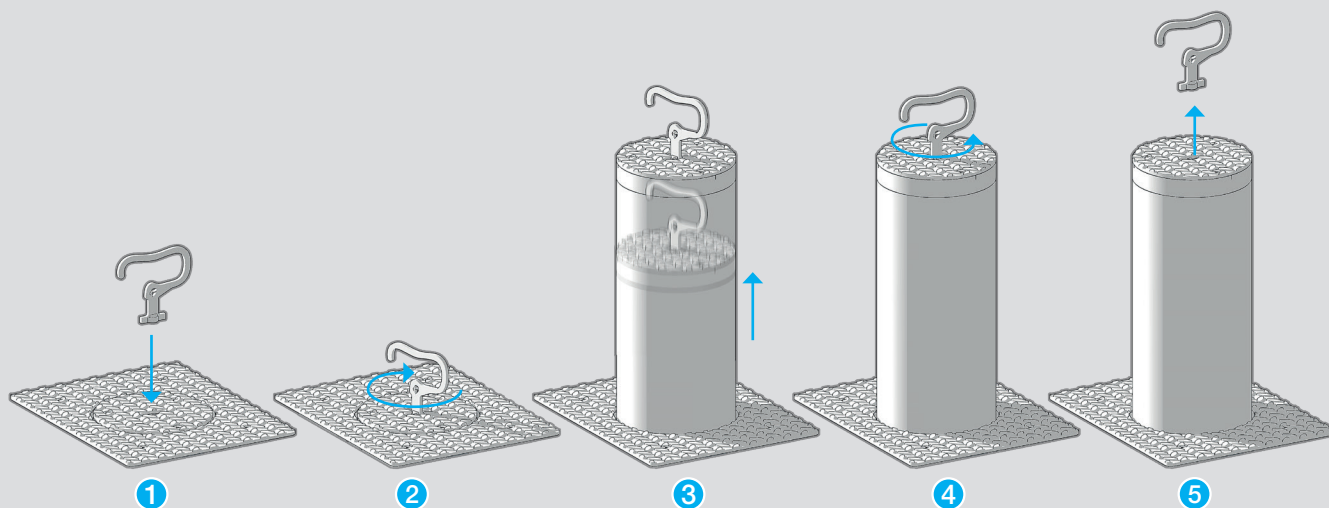
RISE/LOWER MANOEUVRES

The bollard is locked/unlocked thanks to a E11 triangle print spanner wrench to insert on top of the bollard head (system compatible with Firemen key model).

- **No spring, no motor = no piece requiring maintenance**

- **Only 1 locking/unlocking and manoeuvre point**

- 1 Insert the key
- 2 Turn the key left to unlock
- 3 Lift the bollard thanks to the key
- 4 Turn the key right to lock
- 5 Remove the key



DATASHEET

Manual mechanical bollard **BMM**

Manual Mechanical



CAME 
URBACO

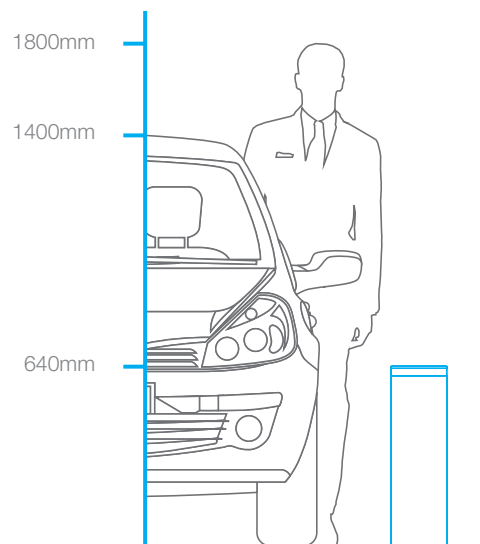
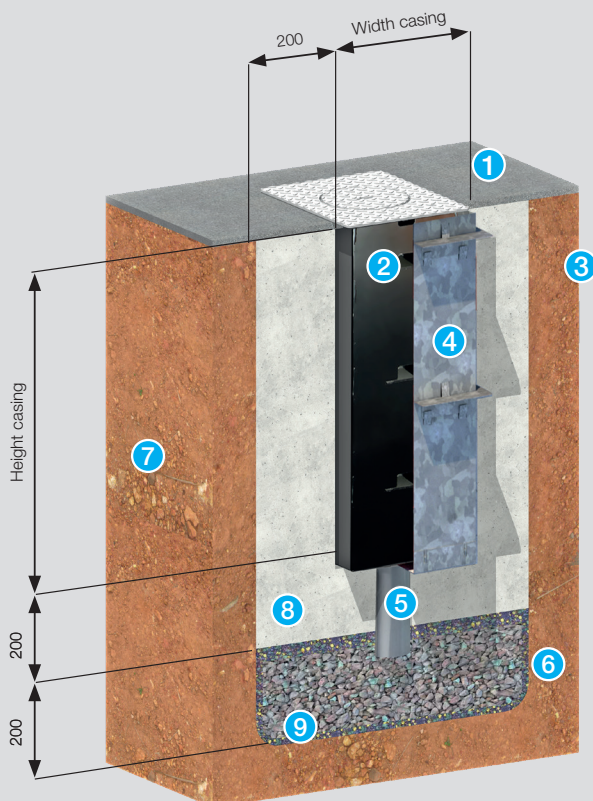
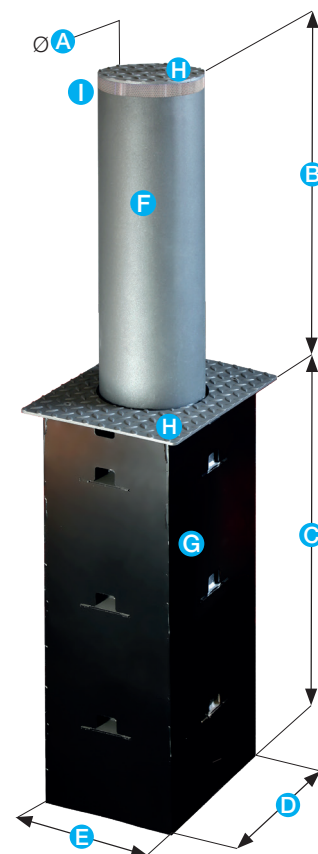
	A	B	C	D	E	Poids
Dimensions (mm)	200	640	805	332	264	121 Kg

- F** Bollard head in steel
- G** Casing in steel
- H** Teardrop cover and top
- I** Class II reflective band



Accessory

- E11 triangle handle



- 1 Finish
- 2 Retractable bollard
- 3 Sheath inlet
- 4 Lost casing (galvanized steel)
- 5 PVC Ø100mm
- 6 Geotextile felt
- 7 Natural soil
- 8 Highly dosed concrete 350 to 400kg of cement per m3
- 9 Drain must be able to flow 20l of water in 5min