

G6 EVO

AN UNIQUE SYSTEM OF INTERCHANGEABLE JACKET
LEGENDARY ROBUSTNESS

CUSTOMIZABLE DESIGN

REDUCED MAINTENANCE AND REFURBISHMENT COSTS

FROM INVENTION TO REVOLUTION

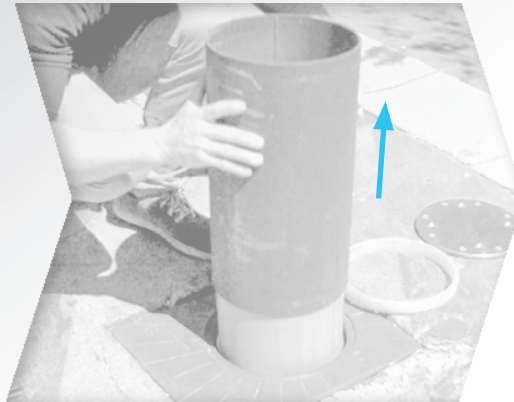
Combining a legendary robustness and uncommon aesthetic, the new **G6 EVO** bollard fits perfectly into any urban planning and access control project. Its innovating interchangeable jacket system allows to customize the installation site, thus making it unique. All this thanks to URBACO's knowhow, the retractable bollards concept inventor, working for over 30 years at the service of innovation, of quality and longevity improvement of its access control solutions.

G6 EVO

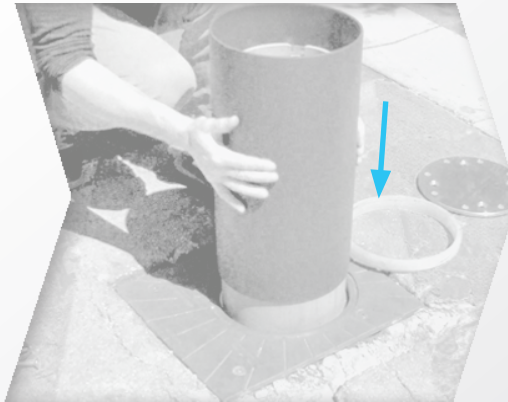
UNSCREW



TAKE THE JACKET OFF



PUT THE JACKET BACK



SCREW BACK AGAIN



CUSTOMIZED JACKET

Cylinder Design
Customization with a logo, text, texture, advertising,
or image



PAINTED JACKET

Cylinder or Chateaufort Design
RAL color to choose



STAINLESS STEEL JACKET

Cylinder or Chateaufort Design

REMOVABLE JACKET & EASIER MAINTENANCE

The **G6 EVO** bollard is equipped with an innovative interchangeable jacket system for customizing the aesthetics of access points and refurbish any damaged bollard heads in less than 5 minutes. The bollard is composed of a raw cast iron head, which provides high impact resistance, covered with a sleeve in steel or stainless steel. The new **G6 EVO** concept makes on site jacket replacement easy and quick, without using any hoisting means.

CAME

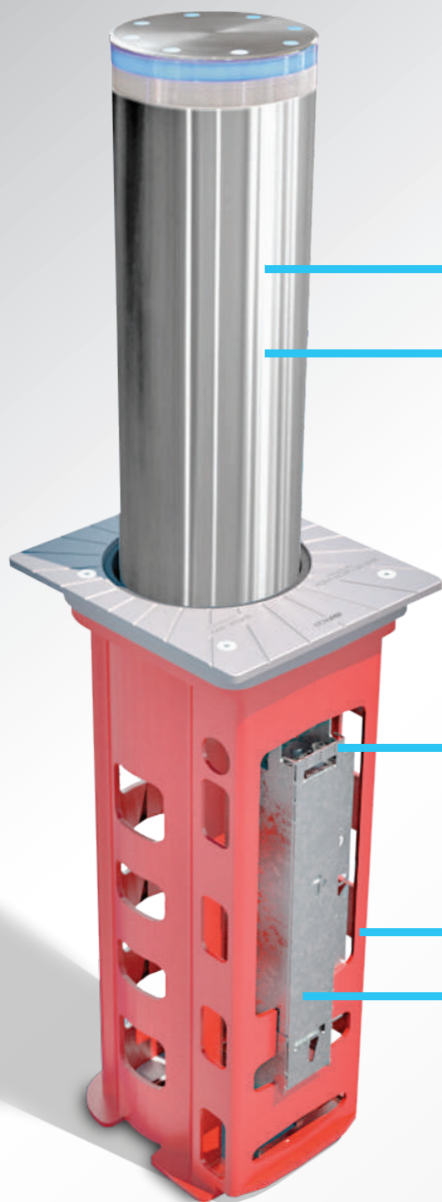
Official Partner



MILANO 2015

FEEDING THE PLANET
ENERGY FOR LIFE

G6 EVO



HIGH RESISTANCE

Urbaco **Monobloc®** concept - Raw bollard head, cover and casing, all made of cast iron, with an **11mm average thickness**. Each part is molded as one piece, without any welding nor wearing part. No maintenance cost for a long-term investment.

RELIABILITY

Time-tested reliability through 4.5 million operating cycles without any failure or part replacement (i.e. 1,200 operating cycles a day for 10 years).

EASY MAINTENANCE

Urbaco engineers have developed a **removable support plate** in galvanized steel, on which are mounted all the components necessary for the bollard's operation. Inserted inside the casing the plate is at hand, easy to pull out, thus facilitating the intervention of service technicians.

AVAILABLE CONFIGURATIONS

DIMENSIONS

Ø200 mm x 750 mm
Ø250 mm x 550 mm
Ø250 mm x 750 mm

MOTORIZATIONS



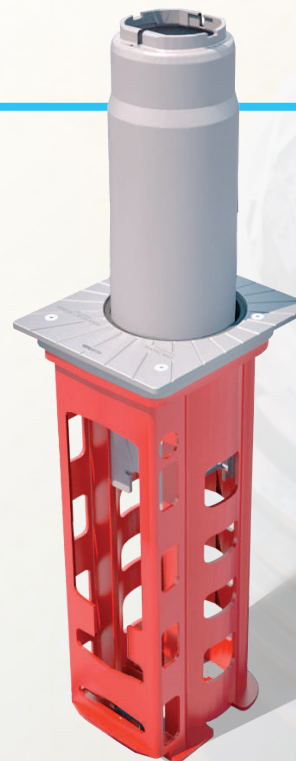
Pneumatic



Hydraulic



Built-in
hydraulic pump



10-YEAR WARRANTY

Raw bollard head, cover and casing **guaranteed for 10 years**, even after a 2.5 tons vehicle collision at 55 km/h*.



LONGEVITY

G6 EVO bollards are intended to withstand repeated shocks, vandalism, rain, frost, sand, dust, solvents agents, induced currents...



COMPLIES WITH NFP98-310 STANDARD
Regarding characteristics and performances of automatic, semiautomatic and manual retractable bollards.



ISO EN 124 - E600 CLASS

Accepted vertical load: 60T per axle. Can be installed in areas that take heavy loads (docks and airports).



COMPLIES WITH THE FRENCH PMR DECREE
All dimensions comply with the French decree of 18 September 2012 regarding technical specifications for road and public area accessibility, enabling Persons with Reduced Mobility to have the best possible day-to-day travel.

OPTIONS

- RGB LED frontal lighting ring and 8 light diffusers on top of the bollard head (visible in «up» and «down» positions)
- Change of LED color by digital multiplexing (DMX)
- Invisible top locking screws (alternative to standard version with visible screws)

mobility made safe and easy

Intellectual property of URBACO - Copying forbidden - Specifications not contractually binding - Changes may be made without prior notice - Most of the models shown are patented - 01/2015
URBACO S.A. - a limited liability company with a capital of 1.5 M€ - Stat 33944567800032 R.C.S. AVIGNON 1999 B 40008 - VAT FR 06 339 445 678



Urbaco S.A.
457 avenue du Clavier
84320 Entraigues - FRANCE
Tél. + 33 (0)490 480 808
urbaco@urbaco.fr - www.urbaco.com



Official Partner

DC-G6EVO-8P-V1.0-EN